

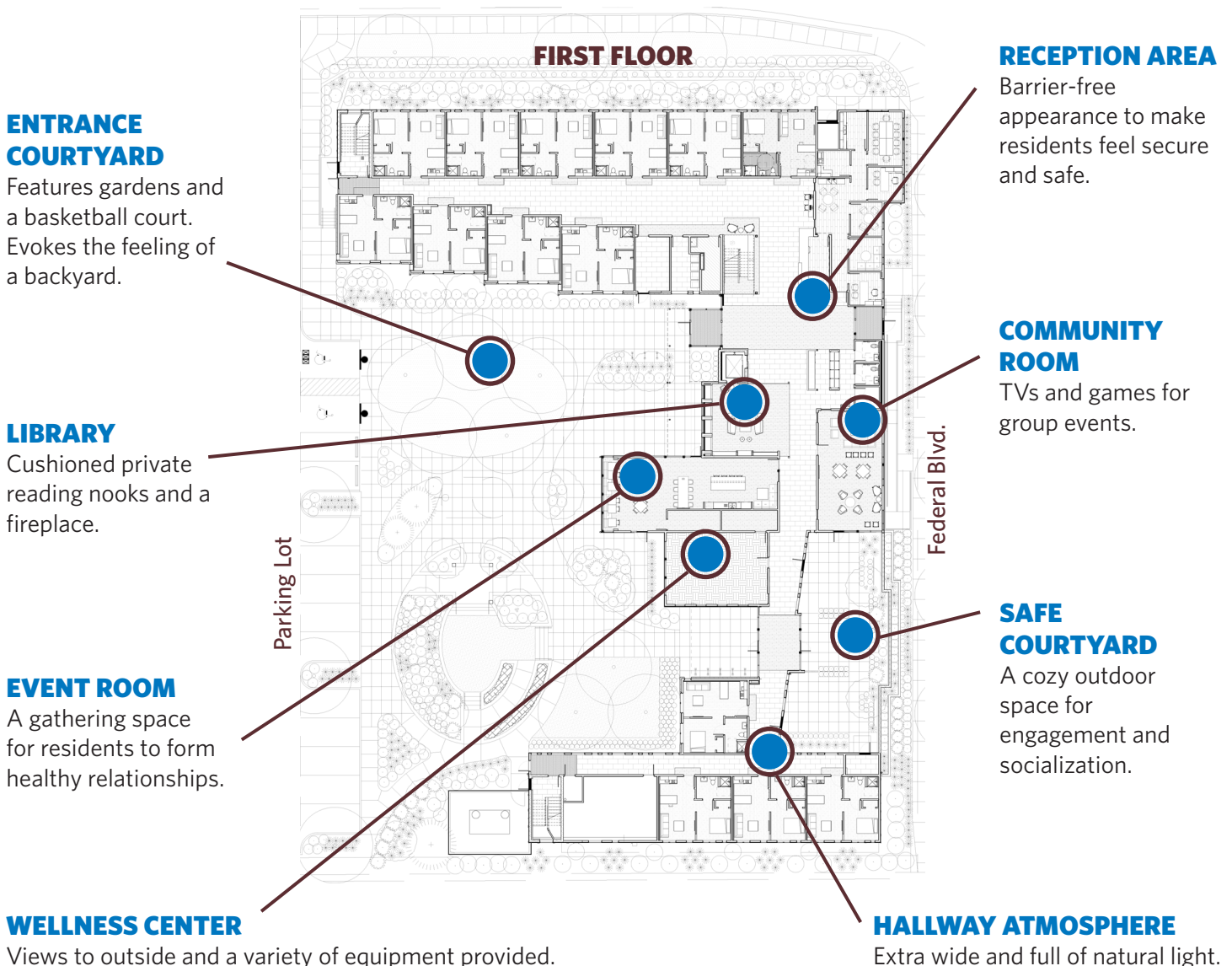


SANDERSON APARTMENTS

Sanderson Apartments is a **permanent supportive apartment home** designed to house 60 individuals. Using a Housing First approach, Sanderson Apartments provides residents a safe, affordable home and support services to address underlying issues of mental health and substance use to help them live independently. The Mental Health Center of Denver is committed to finding solutions to homelessness, and Sanderson Apartments is the largest and most distinctive supportive housing we have built.

TRAUMA-INFORMED CARE & DESIGN

Trauma-informed care is an organizational structure and treatment framework that involves understanding, recognizing and responding to the effects of all types of trauma. As **one of the only buildings in the nation** designed under the trauma-informed care model, Sanderson Apartments provides an inviting environment that minimizes the effects of trauma and avoids any feeling of confinement. To **create a sense of community**, the building is equally divided between engagement spaces and apartment living. It has as few walls as possible and clear sight lines throughout, appearing 'barrier-free.' The apartments' many windows provide abundant light and a **feeling of connection with the outdoors**.





SANDERSON APARTMENTS

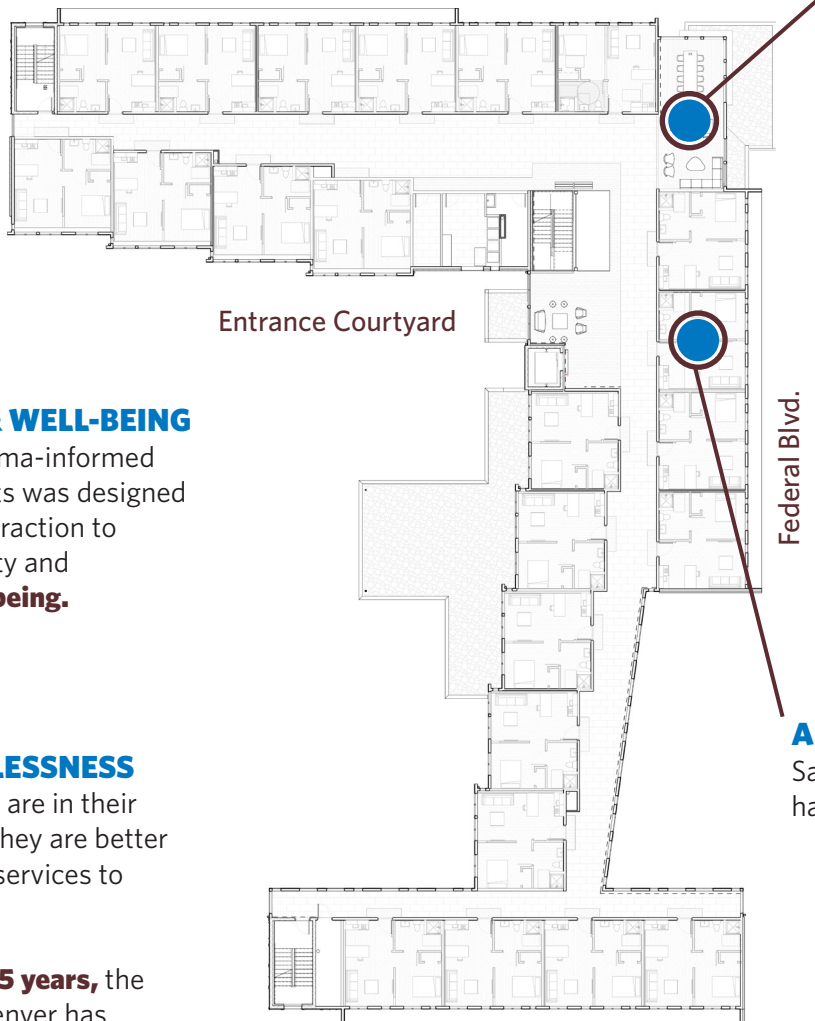
TYPICAL UNIT PLAN

A typical unit is 440 square feet – a cozy space with a fully furnished kitchen, living area, bedroom and bathroom. The units are designed to help residents feel safe.

HALLWAY DESIGN

The extra wide hallways have views to exterior landscape, natural light, multiple and varied sight lines, and group spaces that serve as “porches.” The hallway becomes a “street” – a place of gathering, communication and interaction with other residents.

SECOND AND THIRD FLOORS



ART ROOM

A 2-story space with windows and wood accents that bring the outdoors inside.

Entrance Courtyard

Federal Blvd.

ENHANCING HEALTH & WELL-BEING

Using the principles of trauma-informed care, Sanderson Apartments was designed with various spaces for interaction to create a sense of community and **facilitate health and well-being.**

SOLUTIONS TO HOMELESSNESS

We know that when people are in their own homes and **feel safe**, they are better able to access other social services to improve their well-being.

That’s why for **more than 25 years**, the Mental Health Center of Denver has provided housing solutions for the people we serve.

APARTMENT UNIT

Sanderson Apartments has a total of 60 units.

2017 COLLABORATIVE PARTNERSHIP:

